



Funded by
the European Union

FRP ++ WORKSHOP 2026

Portugal



European Master Course in Advanced Structural
Analysis and Design using Composite Materials

May 20 to 22, 2026



UNIVERSITÀ DEGLI STUDI
DI NAPOLI FEDERICO II

INSA | **U** Université
de Toulouse

Phone
+351 253 510 755

E-mail
secretariat@msc-frp.org

Website
msc-frp.org

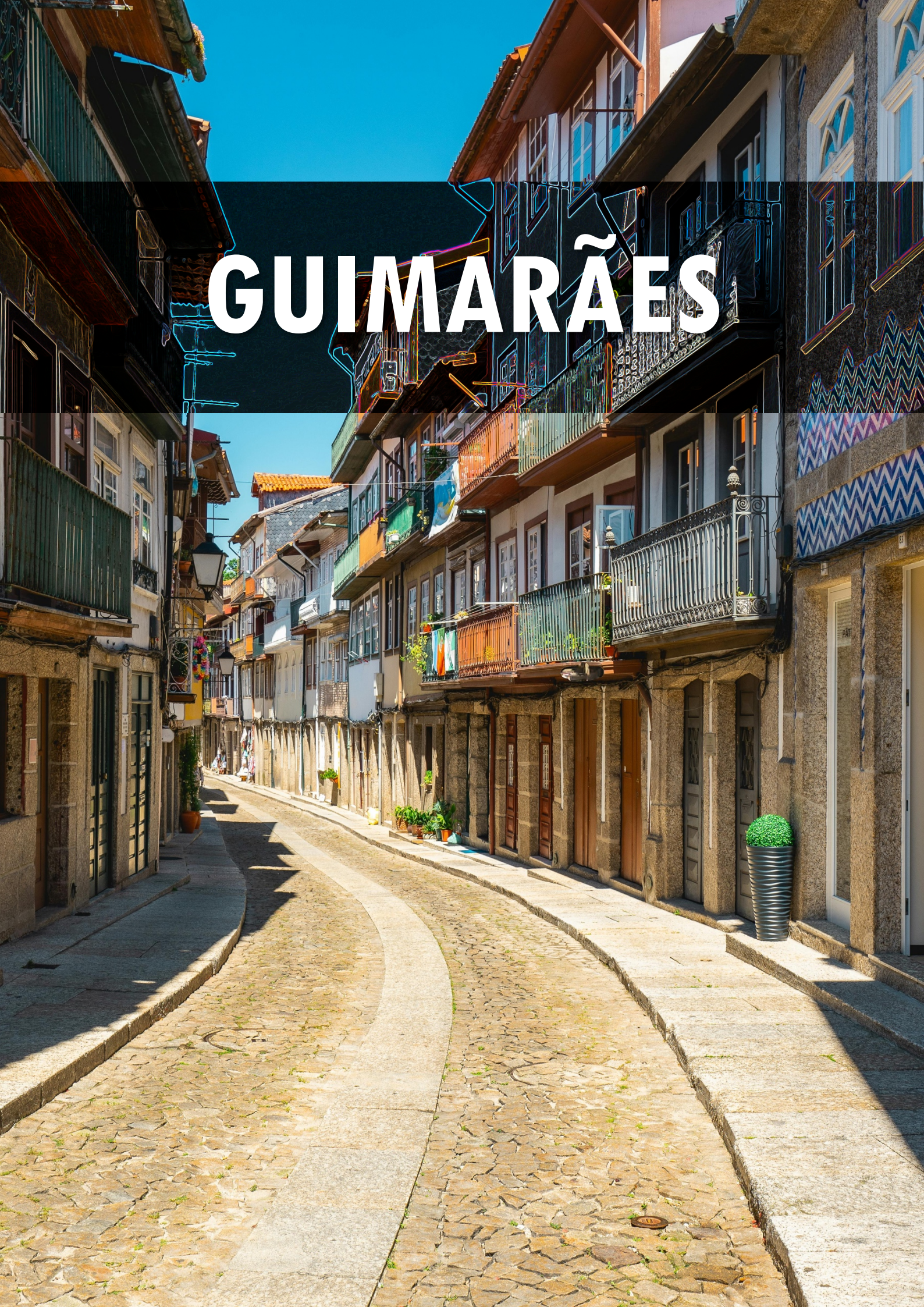


Funded by
the European Union

CONTENT

Content.....	3
Organizing Committee.....	6
Venue	6
Getting to the University of Minho	9
Overall Programme	10
The Hotel	11
Detailed Programme	16
Visit to ENERCON GmbH.....	17
Keynote Lecturer	18
Seminar: Soft Skills	18
NDT Experiments.....	19
MSC Dissertation Pitch	20
Job Fair	22

GUIMARÃES



ORGANIZING COMMITTEE

José Sena Cruz, **UMinho**
Marco Di Ludovico, **UNINA**
Cristina Barris, **UdG**
Bruno Castanié, **INSA/UT**

Luís Correia, **UMinho**
Carla Gomes, **UMinho**
Elisabete Teixeira, **UMinho**

VENUE

The FRP++ Workshop 2026 will be hosted at the University of Minho, with activities taking place at two locations in Guimarães: Azurém Campus and Couros Campus.

The programme on 21 May will take place at Azurém Campus, while the activities on 20 May and 22 May will be held at Couros Campus. Together, the two venues reflect different dimensions of the University of Minho: Azurém is closely linked to engineering, research, and laboratory work; Couros is more directly connected to postgraduate training, design, and the daily academic life of the FRP++ students.

(1) Azurém Campus

The Azurém Campus is one of the main sites of the University of Minho in Guimarães, located close to the historic city centre. It is home to the School of Engineering, most of its degree programmes, the School of Architecture, and selected programmes from the School of Sciences and the Institute of Social Sciences.

The campus also provides a broad range of facilities and support services, including a main library, several specialized libraries, a cafeteria, a grill restaurant, three bars, a medical centre, a sports complex, and reprographic services.

Situated in the Braga District, Guimarães is widely regarded as the “Cidade Berço” — the cradle of Portugal — because of its central place in the country’s history. Its historic centre is recognized as a UNESCO World Heritage Site, and the city is known for balancing a strong architectural and cultural heritage with an active contemporary urban life. The Battle of São Mamede, fought nearby in 1128, is considered a key moment in the formation of Portugal.



Azurem campus. Fotos by + Guimarães



Campus Address:

Campus de Azurém, Alameda da Universidade, 4800 - 058 Guimarães, Portugal

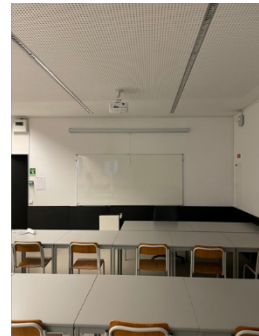
GPS Coordinates: [latitude: 41° 27' 6.85" N - longitude: 8° 17' 33.19" W] | [View on Map](#)

*Meeting Room of the Event: **Room no. 2.09 of the Department of Civil Engineering** (Building no. 2 – 2nd Floor) - <https://whereis.uminho.pt/CA-19.html?room=CA-02-02-32-09>*

(2) Couros Campus

The Couros Campus is home to the Advanced Postgraduate Training Center, which supports master's and doctoral students, and also hosts the undergraduate programme in Theatre. It also includes the UNU-eGOV Operational Unit and the Institute of Design, where the Product Design undergraduate programme is based, along with the potential for further specialization activities in this field. The nearby rehabilitation of the Jordão Theatre and the Avenida Garage has expanded the University's presence in the performing and visual arts.

This is also the campus where FRP++ students attend their coursework, making it not only one of the workshop venues but also a central part of the programme's academic routine.



Couros campus. Fotos from 'Jornal online da UMinho'.

Campus Address:

Campus de Couros, Rua da Ramada, n.º 52 a 68, 4810 - 445 Guimarães, Portugal

GPS Coordinates: [latitude: 41° 26' 24" N - longitude: 8° 17' 27.9" W] | [View on Map](#)

*Meeting Room of the Event: **Room no. 0.18** - <https://whereis.uminho.pt/CC-39.html?room=CC-01-00-36-18>*

Couros is part of the extended UNESCO World Heritage area of Guimarães and has a strong historical identity. During the 19th and early 20th centuries, it was a centre of leather processing and manufacturing, and several traces of that industrial past remain visible today, including former drying areas, dyeing structures, and repurposed factory buildings. Some of these buildings now house new functions, such as the Youth Hostel, the Institute of Design, and the Guimarães Science Center. The area stands as an example of how industrial heritage can be integrated into contemporary academic and urban life.



Historic 'Ilha do Sabão' - once housing leather manufacturing workers, now a charming tourist accommodation owned by a local leather entrepreneur family (left) and a Glimpse into Leather Tanning Artistry in Couros (right) by [National Geographic](#)

GETTING TO THE UNIVERSITY OF MINHO

The University of Minho, venue of the FRP++ Workshop 2026, is easily accessible from Francisco Sá Carneiro International Airport as well as from other parts of Portugal. Participants may reach Guimarães by bus, train, taxi, or car, depending on their point of arrival and travel preferences. The main options are outlined below.

By bus

A direct and convenient option is the GET Bus service connecting Francisco Sá Carneiro International Airport to Guimarães. The journey takes approximately 50 minutes. Additional information on schedules, routes, and booking is available at: <https://www.getbus.eu/en/>

By train

Guimarães is connected to Portugal's rail network by a regular urban train service from Porto. The journey takes approximately 60 minutes and costs around 3 euros. Trains depart from São Bento and Campanhã Stations. Information on tickets, schedules, and services is available from CP – Comboios de Portugal: <https://www.cp.pt/passageiros/en>

For participants arriving at the airport, Campanhã Station can be reached by Metro Line E (violet line) of Metro do Porto. The trip takes about 25 minutes, with departures approximately every 20 minutes. Tickets can be purchased from the automatic ticket machines at the Metro station or at the Airport information desk. Travellers should remember to validate their ticket at the yellow machines located in the stations. The Airport Station is located directly in front of the arrivals area and is connected by an underground passage. Further information is available at: <https://en.metroporto.pt/>

By taxi

If one prefers a taxi from Porto Airport to Guimarães, the journey takes approximately **45 minutes**. The fare was once about **60€**, though with today's fuel prices, that figure should be regarded less as a promise and more as a historical memory.

By motorway

Guimarães is also easily accessible by road. From Porto Airport, the journey takes about 40 minutes via the A3 and A7 motorways. From Braga, it is approximately a 15-minute drive via the A11. Other destinations, including Vigo, Spain (around 90 minutes) and Lisbon (approximately 3 hours to the south), are also accessible via the A11, A3, and A1 motorways.

Getting to Your Accommodation in Guimarães

Once in Guimarães, the final part of the journey is relatively straightforward. A taxi or rideshare service such as Uber from either the Railway Station or the Bus Station to the University of Minho or nearby accommodation will generally cost around 5€.

That said, walking remains a most respectable solution, being both economical and good for the circulation. Your accommodation and the University are within walking distance. The Azurém Campus, for example, is approximately a 22-minute walk from the Bus Station, making it accessible on foot for participants who prefer a simple and economical option.

OVERALL PROGRAMME

Period	DAY 1 20/05	DAY 2 21/05	DAY 3 22/05
Morning	Welcome Session	Welcome	Welcome
	MSc Dissertation Pitch – Session I –	Keynote Lecture I (Eric Moussiaux) – Part I A Coffee-break	Soft skills presentation
	A Coffee-break	Keynote Lecture I (Eric Moussiaux) – Part II	B Job Fair
	MSc Dissertation Pitch – Session II –	Visit to LEST laboratories	
Afternoon		NDT Experiments	Closing ceremony
	A Lunch	A Lunch	
	MSc Dissertation Pitch – Session III –	Visit to ENERCON GmbH	
	Visit to downtown	Visit to Santa Luzia Hill	
		A Social dinner	

A | Financially supported by the EMJM FRP++ Consortium.

B | Events exclusive for EMJM FRP++ students.

THE HOTEL

Choosing accommodation is an important practical step for participants attending the FRP++ Workshop 2026. The most suitable options are not necessarily the most expensive, but those that offer a good balance between price, location, and convenience. The four hotels presented below respond to different needs and preferences. One is particularly convenient for those attending activities at Azurém Campus, another is well located for the Couros area, and the remaining two are strong options for participants who prefer to stay closer to the city centre, the railway station, or the main bus connections. Together, they provide a range of affordable and practical choices for students and guests travelling to Guimarães.



B&B HOTEL Guimarães

For students who prefer to stay on the Azurém side of the workshop, this is the most convenient and straightforward choice. It is the hotel already used in the previous FRP++ booklet, where it is described as being just a 4-minute walk from Azurém Campus. The hotel itself presents the place as a practical, modern, and budget-conscious option, with free high-speed Wi-Fi, 24-hour reception, breakfast available, and a location that puts the castle about 15 minutes away on foot, the historic centre about 20 minutes, and the bus station about 20 minutes as well. In plain terms: it is the kind of lodging that saves both time and argument, which is often the best luxury a student can afford.

Hotel Address: Rua Rómulo de Carvalho, n.º 340, 4800-019 Guimarães, Portugal

GPS Coordinates: [\[latitude: 41° 27' 8.33" N - longitude: 8° 17' 43.47" W\]](#)



HI Guimarães Pousada de Juventude

If thrift is the governing virtue, this is the first place I should inspect. The official hostel page lists rates from €20 per night, and the property sits in the city centre, in the Couros complex, inside a restored historic building that has already seen more of life than many respectable hotels ever will. It offers the sort of features students actually care about: Wi-Fi, breakfast, communal areas, a meeting room, terrace, and easy access to both bus and train connections. It is not a place for ceremony, but rather for practicality, conversation, and the honest economy that keeps a travel budget from dying young. For students who want the simplest and most economical base, this is the clear bargain of the list.

Hotel Address: Complexo Multifuncional de Couros, Largo do Cidade, 8, 4810-430 Guimarães, Portugal

GPS Coordinates: [[latitude: 41° 26' 24.41" N - longitude: 8° 17' 35.76" W](#)]



ibis Guimarães Centro

The ibis Guimarães Centro is for those who like their budget lodging to behave with a little more hotel discipline. Accor describes it plainly as an economy hotel, and the advantages are easy enough to count: it sits in the heart of the city, has free Wi-Fi, a 24-hour reception desk, a 24-hour bar and snack service, and it is especially convenient for anyone arriving by bus, since the central bus stop is about 100 metres away, or roughly a 4-minute walk. The hotel also places guests within walking distance of the old town, the castle, and the main historic sights. For students who want a private room, reliable services, and very easy transport connections, it is a sensible and respectable compromise between thrift and comfort.

Hotel Address: Avenida Conde Margaride 12, Creixomil, 4810-537 Guimarães, Portugal

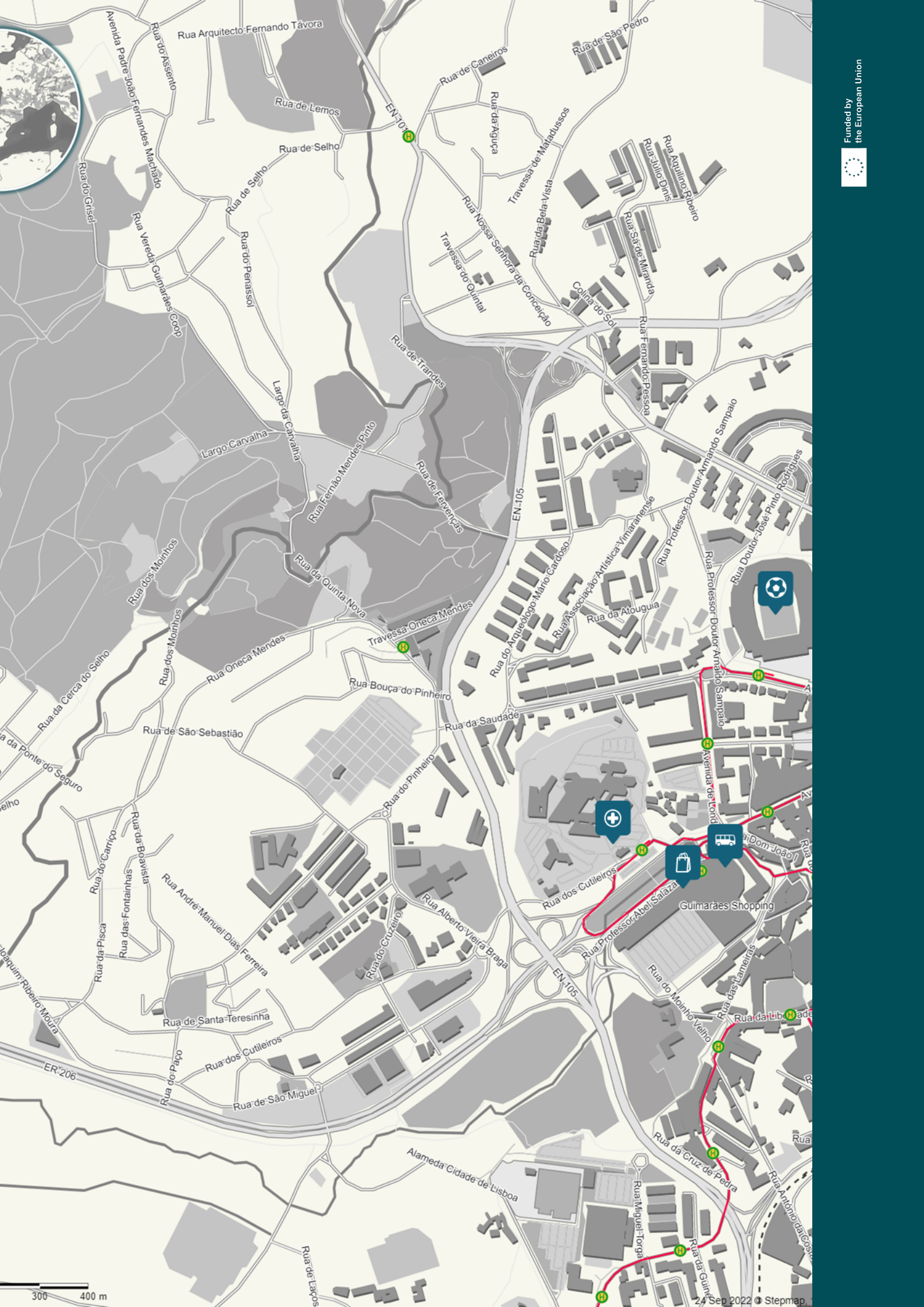
GPS Coordinates: [[latitude: 41° 26' 29.99" N - longitude: 8° 18' 8.69" W](#)]



STAY HOTEL Guimarães Centro

This one is well suited to the student who values a central location and prefers to keep one foot near the historic centre and the other near the train station. According to Turismo de Guimarães, the hotel stands just outside the historic centre and about a 5-minute walk from Guimarães railway station. The rooms are described as modern, with desk space, cable and satellite TV, and free Wi-Fi, while breakfast and a 24-hour bar help cover the usual wants of travellers who do not wish to begin each day in distress. It may not be the most monastic economy on this list, but it is a practical choice for students who want a conventional hotel, easy rail access, and a location that lets them reach the old city without ceremony or effort.

Hotel Address: Av. Dom João IV, n.º 631, 4810-532 Guimarães, Portugal
GPS Coordinates: [[latitude: 41° 26' 14.15" N - longitude: 8° 17' 29.39" W](#)]

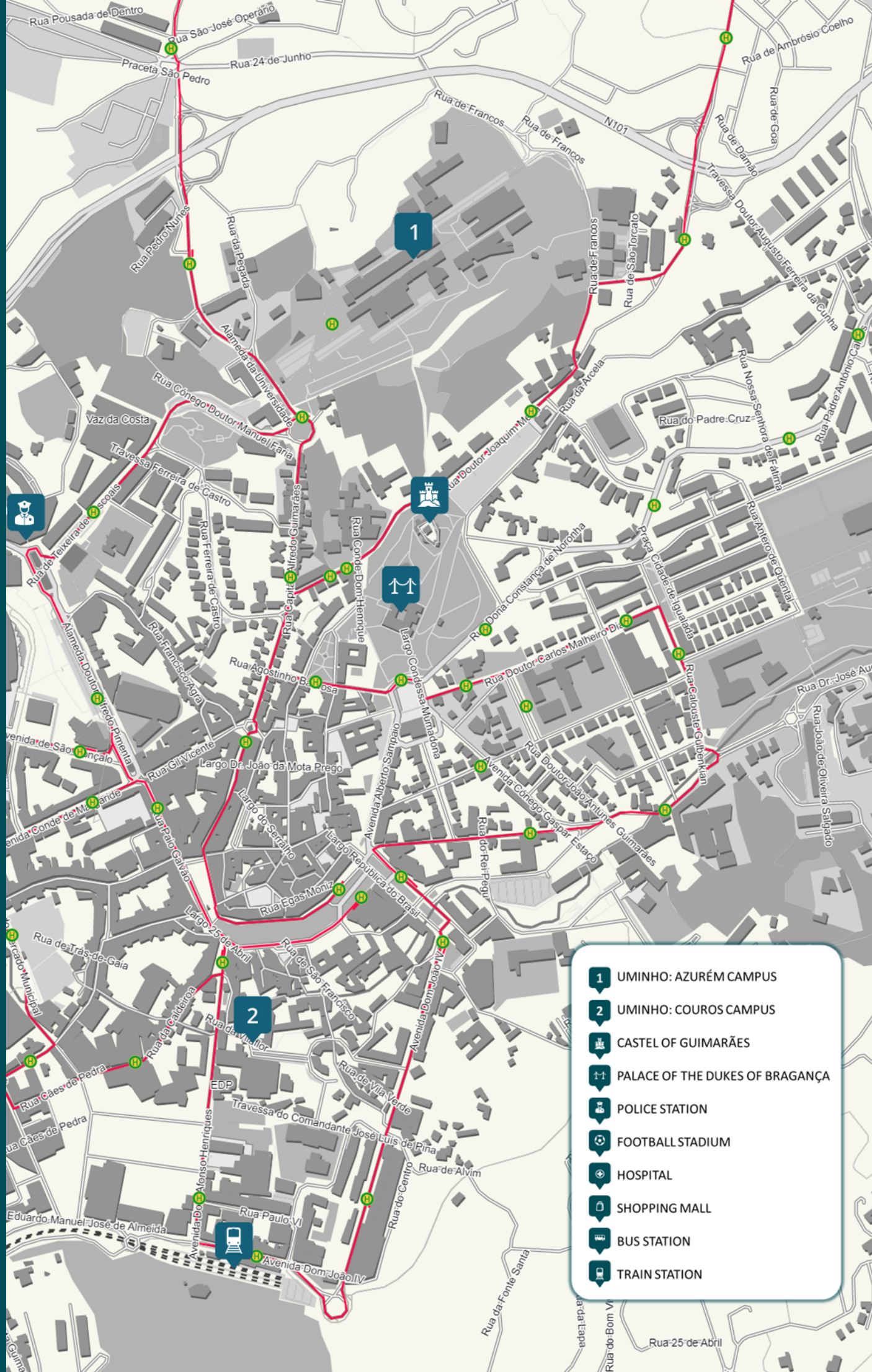


300 400 m

24 Sep 2022 © Stepmap



Funded by
the European Union



- 1** UMINHO: AZURÉM CAMPUS
- 2** UMINHO: COUROS CAMPUS
- CASTEL OF GUIMARÃES
- PALACE OF THE DUKES OF BRAGANÇA
- POLICE STATION
- FOOTBALL STADIUM
- HOSPITAL
- SHOPPING MALL
- BUS STATION
- TRAIN STATION

DETAILED PROGRAMME

DAY 1	Wednesday, 20 May 2026
	MSc Dissertation Pitches & Visit to the Historic Centre of Guimarães Venue: Campus de Couros, Guimarães
08:15-09:00	Welcome
09:00-10:30	MSc Dissertation Pitch I (6 students × 15 min)
10:30-11:00	Coffee break
11:00-12:30	MSc Dissertation Pitch II (6 students × 15 min)
12:30-14:00	Lunch
14:00-16:00	MSc Dissertation Pitch III (8 students × 15 min)
16:00-18:30	Guided visit to the historic centre of Guimarães, a UNESCO World Heritage Site, including the Ducal Palace
DAY 2	Thursday, 21 May 2026
	Keynote Lecture I, Lab Activities, Technical Visit & Social Dinner Venue: Campus de Azurém, Guimarães
08:15-08:30	Welcome
08:30-09:30	Keynote Lecture I - Eric Moussiaux (Part I)
09:30-09:45	Coffee break
09:45-10:30	Keynote Lecture I - Eric Moussiaux (Part II)
10:30-12:00	Visit to the UMinho Structural Laboratory (LEST), including hands-on NDT activities
12:00-13:30	Lunch
13:30-16:30	Technical visit to ENERCON GmbH, wind turbine blade plant, Viana do Castelo
16:30-17:30	Visit to Santa Luzia Hill, with an overview of Viana do Castelo and the offshore wind farm (WindFloat project)
19:30-22:00	Social dinner
DAY 3	Friday, 22 May 2026
	Lectures from the Advisory Board Venue: Campus de Couros, Guimarães
08:45-09:00	Welcome
09:00-10:00	Soft Skills Seminar
10:00-12:30	Job Fair
12:30-13:00	Closing Ceremony

VISIT TO ENERCON GMBH

On 21 May 2026, participants will travel to Viana do Castelo to visit the facilities of ENERCON GmbH, a notable name in the renewable energy world and a firm well acquainted with the serious business of turning wind into usefulness. At this site, wind turbine blades made with FRP composites are manufactured on a scale large enough to impress even those who believe they have seen most things worth seeing.



Scheduled from 13:30 to 16:30, this technical visit will offer students a rare look at the industrial life of composite materials beyond the classroom and laboratory. It will show how engineering ideas, once born in calculations and specimens, are made to earn their living in full-sized production.

The visit will also cast some light on the growing importance of composite materials in cleaner and more efficient energy systems. By observing ENERCON's operations firsthand, participants will gain a clearer understanding of how advanced manufacturing supports the European wind energy sector and contributes to a more sustainable future.

KEYNOTE LECTURER



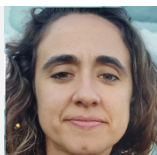
Eric Moussiaux
Exel Composites / Free University of Brussels
Belgium

Eric Moussiaux holds a Master of Science degree in Civil Engineering from the Free University of Brussels and a postgraduate Master of Science from Virginia Tech in composites and adhesives. He is currently vice president technology at Exel Composites, after previous positions in R&D, sales and marketing and business unit management in the field of pultrusion. He fell in love with composites during his student days over forty years ago, and started his career in it back in 1988.

Eric Moussiaux is one of the founders and long-term Board Member of the European Composites Industry Association EuCIA. He also holds seats in the Board of the European Pultrusion Technology Association EPTA and the Belgian technology federation Agoria Flanders. He is the liaison officer for EuCIA in CEN TC250 WG4 writing the Eurocode for composites and developing an execution code for composite structures. Eric's involvement in composite industry associations spans over three decades.

Privately Eric Moussiaux has a special interest in education, teaching his own course on 'Design of lightweight composite structures' as Guest Professor at the Free University of Brussels, and having a seat in the Board of a group of 28 schools in the South-West region of Brussels.

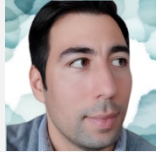
SEMINAR: SOFT SKILLS



Elisabete Teixeira
University of Minho
Portugal

Elisabete Teixeira has built a distinguished academic and professional trajectory grounded in Environmental Engineering. Her work has spanned topics ranging from eco-efficient concretes and biomass fly ash to broader challenges related to resilient infrastructure, sustainability, and climate adaptation. Throughout this path, Elisabete Teixeira has led research teams, coordinated European projects, and developed deep expertise through consistent and dedicated work. In 2024, she joined the FRP++ programme as Science Communication Manager, bringing not only strong scientific experience but also a clear understanding of how complex ideas can be communicated effectively and meaningfully. In this soft skills session, Elisabete Teixeira will offer students a practical and reflective perspective on communication, research, and professional development.

NDT EXPERIMENTS



Luís Correia
University of Minho
Portugal

Luís Correia is a postdoctoral researcher at ISISE and holds a PhD in Civil Engineering from the University of Minho. His academic and research work has focused extensively on the durability and long-term behaviour of reinforced concrete members strengthened with FRP materials. In addition to his research activities, Luís Correia serves as Deputy Coordinator of the FRP++ programme, contributing to both the academic structure of the course and the development of its practical training components. During the workshop, Luís Correia will lead the NDT experiments at the LEST Structural Laboratory, providing students with a valuable opportunity to observe engineering practice through direct testing, analysis, and experimental evaluation. His session will offer practical insight into the application of structural engineering principles in a laboratory context.

MSC DISSERTATION PITCH

This session divided in 3 parts, is designed to give to the students an opportunity to share their progress on their MSc dissertation work, as well as any challenges they have faced and their plans for completion.

Each student will have 8 minutes to present on their work so far, followed by a brief Q&A session with the audience of **6 minutes**. We encourage all attendees to actively engage with the presenters, ask questions, and provide feedback.

DURING THESE PRESENTATIONS, STUDENTS SHOULD AIM TO COVER THE FOLLOWING TOPICS:

- The background and context of the research questions or topics
- The specific aims and objectives
- The methodology and research design used
- The results obtained so far
- Any challenges or roadblocks are encountered
- Future plans for completing the work, including timelines and potential next steps

By sharing their progress with each other, students will not only receive valuable feedback and support from their peers but also gain experience in presenting their work in a professional setting.

The participation of the students in the MSc Dissertation Pitch is **compulsory** either in person or virtually (by videoconference), according to the sequence below. We would like to inform you that the link for uploading your PowerPoint (PPT) presentations has already been provided to you via email. Please ensure that you have uploaded your presentations to the designated folder by May 19th, 2026.

MSc Dissertation - Pitch I

Sustainable Materials & Circular Economy

09h00 – 09h15	Alvaro Souvion (UMinho) <i>Optimization of WTB waste for composite laminates</i>
09h15 – 09h30	Conor Mackle (UdG) <i>Repurposed Wind Turbine Blade as Structural Roof Elements</i>
09h30 – 09h45	Yasaman Jafari (UMinho) <i>LCA of Construction Materials with WTB waste</i>
09h45 – 10h00	Karini Oliveira (UMinho) <i>Mechanical Characterisation of 3D-Printed Sandwich Structures</i>
10h00 – 10h15	Nur MUHAMMAD (UdG) <i>Impact of thermal degradation on vitrimer resin</i>
10h15 – 10h30	Youssef Ait Lamine (INSA/UP) <i>Experimental and numerical analysis of a mold compensation technique</i>

MSc Dissertation - Pitch II

Infrastructure Repair & Structural Strengthening

11h00 – 11h15	Basel Fouda (UMinho) <i>Strengthening of Steel Profiles with Web Openings using FRP</i>
11h15 – 11h30	Farid Ahmadi (UNINA) <i>FRP-to-Masonry Bond Behaviour considering Mortar Joint Discontinuities</i>
11h30 – 11h45	John Francis Emolu (UMinho) <i>FRP Repair of Deteriorated Steel Prestressed Concrete Piles</i>
11h45 – 12h00	Guiller Gumpad (UdG) <i>Flexural design of FRP reinforced concrete beams vs international standards</i>
12h00 – 12h15	Elvis Amoah Ofofu (UdG) <i>Design and numerical analysis of composite deployable bridge structures</i>
12h15 – 12h30	Rida Jabbar (UMinho) <i>Localised spot bonding of braided composite rebars</i>

MSc Dissertation - Pitch III

Advanced Mechanics, AI & Damage Modeling

14h00 – 14h15	Aritz Larrinaga (UMinho) <i>Validation of an Interlaminar Damage Model in Large Structures</i>
14h15 – 14h30	Sarahi Castillo Rionda (UdG) <i>Transition time criteria for mode I and mode II delamination tests</i>
14h30 – 14h45	Temitayo Afolabi (UMinho) <i>AI for Durability Prediction of relatively thick FRP composites</i>
14h45 – 15h00	Sara Marie Delcourte (INSA/UP) <i>AFP In-Situ Consolidation for Repair of Aerospace Composite Structures</i>
15h00 – 15h15	Rakibul Hasan (UdG) <i>Microstructural Analysis of Materials for Liquid Hydrogen (LH₂) Storage Tank</i>
15h15 – 15h30	Mintesnot Asnake Yuma (UdG) <i>CFRP microstructural patterns for improved Open Hole Compression performance</i>
15h30 – 15h45	Yousaf Haroon (UMinho) <i>GFRP Rebars with Graphene-Modified Epoxy Matrix</i>
15h45 – 16h00	Roberto Jorge Martinez Padilla (UdG) <i>Damping coefficient of composite materials</i>

For those participating in the MSc Dissertation Pitch Sessions via videoconference, please note that the sessions will be conducted using the Zoom platform. It is essential that you have Zoom installed on your device and are familiar with its usage prior to the workshop. To join the videoconference, please use the following [link](https://zoom.us/j/93596409822?pwd=V6ZC8Jatakatik1jFdGcpF1kU0hMXe.1):



<https://zoom.us/j/93596409822?pwd=V6ZC8Jatakatik1jFdGcpF1kU0hMXe.1>

JOB FAIR

The Job Fair is an exclusive event for EMJM FRP++ students, designed to bridge the gap between academic preparation and professional practice. It provides a dedicated space for direct student interaction with leading industrial partners and research institutions specializing in the field of advanced composite materials.

The session is structured in two distinct parts to maximize engagement. First, each participating organization will deliver a 10-minute presentation introducing their company profile, activities, and available professional or research positions. Following these presentations, the Job Fair will transition into an interactive networking session conducted via online breakout rooms. Students will have the opportunity to move between specific company rooms to participate in discussions, ask questions, and interact directly with company representatives.

For students participating in the Job Fair sessions via videoconference, the event will be conducted using the Zoom platform. It is essential that you have Zoom installed on your device and are familiar with its usage prior to the workshop. To join the online session, please use the following link:



<https://zoom.us/j/95127294105?pwd=99BpiNT9Ba1u1V22on29tsRMNIHdj6.1>

The presentations will follow the schedule below:

10h00 – 10h10	<i>Politechnika Rzeszowska</i>
10h10 – 10h20	<i>Enercon GmbH</i>
10h20 – 10h30	<i>Exel Composites</i>
10h30 – 10h40	<i>The LRC</i>
10h40 – 10h50	<i>PIEP</i>



Politechnika Rzeszowska (Rzeszów University of Technology)
Poland

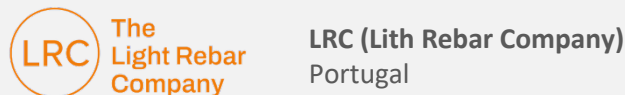
A prominent technical university in southeastern Poland that maintains strong ties to the aerospace and chemical processing industries. Its research teams contribute significantly to material sciences and structural testing within regional technology hubs.



One of the world's pioneering forces in wind energy technology, renowned for its innovative gearless turbine designs. The company relies extensively on fiber-reinforced polymers to manufacture high-performance turbine components at an impressive industrial scale.



A leading global technology company that designs and manufactures lightweight composite profiles and solutions using continuous manufacturing processes like pultrusion. Its structural applications serve diverse industries, including wind energy, transportation, and infrastructure.



An innovative Portuguese company specializing in the development and manufacturing of advanced composite reinforcement solutions for the construction industry. The company focuses on high-performance materials like GFRP rebars to deliver sustainable, corrosion-free alternatives for structural concrete applications.



An independent innovation center based in Portugal that provides advanced R&D and engineering services in polymer and composite technology. PIEP supports the industry through material characterization, structural processing, and the development of sustainable, eco-efficient material formulations.



Funded by
the European Union



FRP++

Advanced structural analysis and
design using composite materials